

Technical data:

Voltage: 6V to 24V

Switching value: According to KMGY ID / 3W non-inductive

Temperature limits:

Operating temperature: -25 °C .. +120°C

Storage temperature: -45°C .. +120°C

Vibration protection: +10dB in frequency range 25–1000 Hz (0dB=g)

Electric connector: According to KMGY ID

Electric connection: Common ground

Protection:

dust and waterproof: IP 65

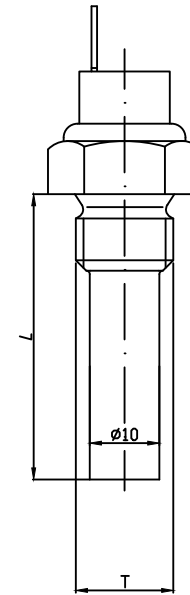
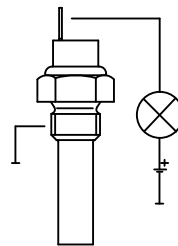
electrical connection: IP 00

Tightening torque: Max. 20 Nm

Mounting position: optional

Weight: 0.1 kg

Wiring diagram:



All proprietary rights reserved by KMGY Ltd. This drawing is not to be reproduced or in any way utilized for the manufacture of a component or unit herein illustrated, and may not be released to other parties, without written consent by KMGY Ltd. Any infringement will be legally pursued.

ELECTRICAL TEMPERATURE SWITCH

KMGY ID:
38 0050 37 xxx

KMGY
Design:
Date:
Supervisor:

Technical data:

Voltage: 6V to 24V

Measuring range: According to KMGY ID

Resistance: According to KMGY ID

Temperature limits:

Operating temperature: $-25\text{ }^{\circ}\text{C} \dots +120\text{ }^{\circ}\text{C}$

Storage temperature: $-45\text{ }^{\circ}\text{C} \dots +120\text{ }^{\circ}\text{C}$

Vibration protection: +10dB in frequency range 25–1000 Hz (0dB=g)

Electric connector: According to KMGY ID

Electric connection: Common ground

Protection:

dust and waterproof: IP 65

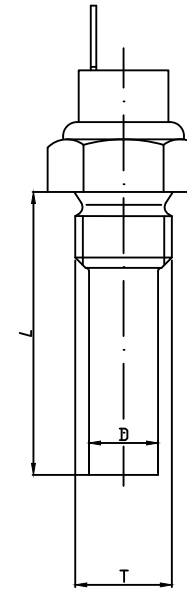
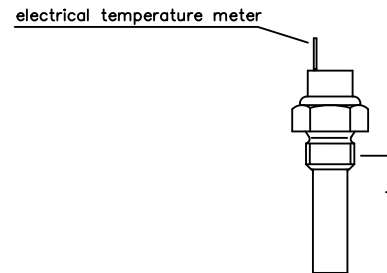
electrical connection: IP 00

Tightening torque: Max. 20 Nm

Mounting position: optional

Weight: 0.1 kg

Wiring diagram:



All proprietary rights reserved by KMGY Ltd. This drawing is not to be reproduced or in any way utilized for the manufacture of a component or unit herein illustrated, and may not be released to other parties, without written consent by KMGY Ltd. Any infringement will be legally pursued.

ELECTRICAL TEMPERATURE TRANSMITTER

KMGY ID:

38 0047 36 xxx

38 0060 36 xxx

38 0251 36 xxx

KMGY

Design:

Date:

Supervisor:

Technical data:

Voltage: 6V to 24V

Measuring range: According to KMGY ID

Resistance: According to KMGY ID

Switching value: According to KMGY ID / 3W non-inductive

Temperature limits:

Operating temperature: -25 °C .. +120°C

Storage temperature: -45°C .. +120°C

Vibration protection: +10dB in frequency range 25-1000 Hz (0dB=g)

Electric connector: According to KMGY ID

Electric connection: Common ground

Protection:

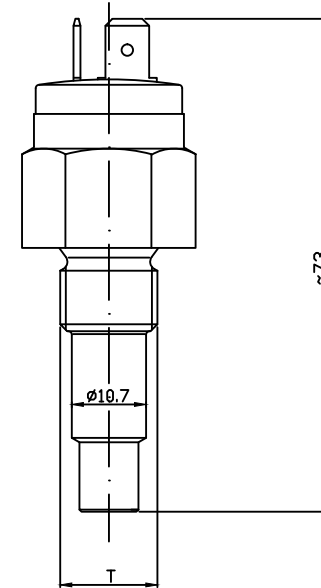
dust and waterproof: IP 65

electrical connection: IP 00

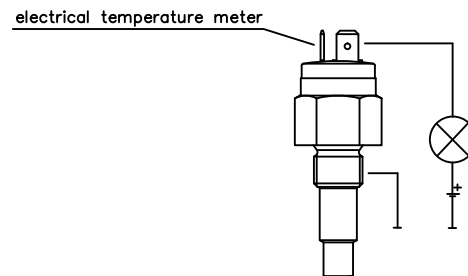
Tightening torque: Max. 20 Nm

Mounting position: optional

Weight: 0.1 kg



Wiring diagram:



All proprietary rights reserved by KMGY Ltd. This drawing is not to be reproduced or in any way utilized for the manufacture of a component or unit herein illustrated, and may not be released to other parties, without written consent by KMGY Ltd. Any infringement will be legally pursued.

ELECTRICAL TEMPERATURE TRANSMITTER AND SWITCH




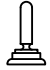




KMGY ID:
38 0074 39 xxx

KMGY
Design:
Date:
Supervisor:

Characteristics				
Measuring range	0-120°C	0-150°C	0-220°C	0-120°C*
Temperature (°C)	90	120	160	90
Resistance (Ohm)	51.2	36.9	32.2	102.4

* Type 38025136xxx

Connectors:

A	DIN 6.3	
B	M4 Nut	
C	ø6.3 x 0.8	
D	ø4	
E	DIN 6.3	
F	M4 Plastic	
G	DIN 6.3 - 90°	
H	DIN 6.3 (x2)	

ELECTRICAL TEMPERATURE TRANSMITTER

All proprietary rights reserved by KMGY Ltd. This drawing is not to be reproduced or in any way utilized for the manufacture of a component or unit herein illustrated, and may not be released to other parties, without written consent by KMGY Ltd. Any infringement will be legally pursued.

KMGY
 Design: _____
 Date: _____
 Supervisor: _____

KMGY ID	Thread T	Connector	Range (°C)	L (mm)	D (mm)	Switching point (°C)
38004736001	M14X1.5	A	120	29	9	
38004736002	M18X1.5	A	120	29	10	
38004736003	5/8Z	A	120	29	10	
38004736004	M14X1.5	E	220	29	9	
38004736005	M14X1.5	A	150	29	9	
38004736006	3/8T	A	150	29	9	
38004736009	M14X1.5	A	120	29	9	
38004736010	M14X1.5T	A	120	29	9	
38004736011	M16X1.5T	A	120	29	9	
38004736012	1/2-14 NPTF	A	120	29	9	
38004736014	M14X1.5	E	120	29	9	
38004736015	M14X1.5	A	150	29	9	
38004736017	M14X1.5	E	120	29	9	
38004736018	9/16-18 UNF	A	150	29	10	
38004736022	M16X1.5	A	120	29	9	
38004736023	3/8-19 BSP	A	150	29	9	
38004736024	3/8-19 BSP	A	120	29	9	
38004736025	1/2-14 NPTF	E	150	29	9	
38004736027	5/8-18 UNF	E	120	29	9	
38004736028	1/4-18 NPTF	E	120	29	9	
38004736029	M18X1.5	E	120	29	9	
38004736030	M14X1.5	E	120	29	9	
38004736031	M14X1.5T	B	120	29	9	
38004736032	M14X1.5	C	150	12.5	9	
38004736033	M16X1.5	E	120	29	9	
38004736034	M14X1.5	E	150	29	9	
38004736035	1/2-14 NPTF	E	120	29	9	
38004736037	M16X1.5	E	120	29	9	
38004736038	M14X1.5	E	120	29	9	
38004736042	M22X1.5	E	150	29	10	
38004736043	M16X1.5	E	120	29	9	
38004736044	M16X1.5	E	120	29	9	
38004736046	M14X1.5	E	120	29	9	
38004736047	1/2-14 NPTF	E	150	29	9	
38004736048	M16X1.5	E	150	29	9	
38004736049	1/2-20 UNF	E	150	29	9	
38004736050	M22X1.5	E	150	29	9	
38004736052	M16X1.5	C	150	29	9	
38004736054	3/8-18 NPTF	E	120	29	9	
38004736055	M18X1.5	E	120	29	9	
38004736056	5/8-18 UNF	E	120	29	10	
38004736057	1/2-14 NPTF	B	150	29	9	
38004736059	3/8-18NPTF	E	150	29	9	
38004736060	M16X1.5	E	120	29	9	
38004736061	3/8-18 NPTF	A	120	29	10	
38004736065	1/2-14 NPTF	A	120	29	9	
38004736066	1/2-14 NPTF	E	150	29	9	
38004736500	M14X1.5	A	120	29	9	
38004736501	5/8-18 UNF-3A	A	120	29	9	
38004736502	M18X1.5	A	120	29	9	
38004736503	M14X1.5	F	120	29	9	
38004736504	M16X1.5	F	120	29	9	

KMGY ID	Thread T	Connector	Range (°C)	L (mm)	D (mm)	Switching point (°C)
38004736505	5/8-18 UNF-2A	A	120	29	9	
38004736506	M16X1.5	A	120	29	9	
38004736508	M14X1.5	A	150	29	9	
38004736509	1/2-14 NPTF	B	150	29	9	
38004736510	1/2-14 NPTF	A	150	29	9	
38004736514	M16X1.5	G	150	15	9	
38004736515	M14X1.5	G	150	15	9	
38004736517	M10X1T	C	120	10.5	-	
38005037001	M18x1.5	A		41		100
38005037003	M14x1.5	A		41		92
38005037004	K3/8" GOST	A		41		106
38005037005	K3/8" GOST	A		41		95
38005037006	K3/8" GOST	A		41		115
38005037007	M14x1.5	A		41		125
38005037008	M14x1.5	A		41		105
38005037009	M14x1.5	A		41		85
38005037011	K3/8" GOST	A		41		100
38005037014	M14x1.5	A		41		135
38005037015	M14x1.5	A		41		94
38005037019	M14x1.5	A		41		92
38005037020	M14x1.5	A		41		130
38005037042	M14x1.5	A		29		100
38005037043	M14x1.5	A		29		140
38005037056	M14x1.5	A		29		95
38005037057	M14x1.5	A		29		130
38005037065	M14x1.5T	A		29		80
38005037067	M14x1.5T	A		29		100
38005037068	M14x1.5	A		29		105
38005037069	M14x1.5	A		29		97
38005037070	M14x1.5	A		29		95
38005037071	1/2-14 NPTF	A		29		105
38005037072	M14x1.5	A		29		110
38005037073	M14x1.5	A		29		93
38005037074	M14x1.5	A		29		92
38005037075	M14x1.5	A		29		90
38005037076	M14x1.5	A		29		85
38005037077	M14x1.5	A		29		70
38005037078	M14x1.5	A		29		55
38005037079	M14x1.5	A		29		120
38005037081	M14x1.5	A		29		100
38005037082	M14x1.5	A		29		90
38005037083	M14x1.5	A		29		85
38005037084	M14x1.5	A		29		105
38005037087	1/2-14 NPTF	A		29		113
38005037089	1/2-14 NPTF	A		29		95
38005037091	M14x1.5	A		29		115
38005037093	M14x1.5T	A		29		60
38005037095	M14x1.5	A		29		125
38005037096	M14x1.5	A		29		60
38005037097	M14x1.5	A		41		95
38005037098	M14x1.5	A		29		120
38005037100	M14x1.5	A		29		80

KMGY ID	Thread T	Connector	Range (°C)	L (mm)	D (mm)	Switching point (°C)
38005037105	1/2-14 NPTF	A		29		105
38005037106	1/2-14 NPTF	A		29		120
38005037109	1/2-14 NPTF	A		29		103
38005037500	M14x1.5	A		29		140
38005037501	M14x1.5	A		29		90
38005037502	M14x1.5	A		29		110
38005037503	M14x1.5	A		29		95
38005037506	M14x1.5	A		29		95
38005037508	M14x1.5	A		29		120
38005037510	M14x1.5	A		29		100
38005037511	M14x1.5	A		29		105
38005037512	M14x1.5	A		29		55
38005037514	M14x1.5	A		29		115
38005037515	M14x1.5T	A		29		80
38005037518	M18x1.5	A		29		75
38005037520	M14x1.5	A		29		130
38005037524	1/2-14 NPTF	A		29		103
38005037525	3/8-18 NPTF	A		29		103
38006036001	M10X1.5	C	220	21	6.9	
38006036003	M10X1	C	220	21	6.9	
38006036004	M10X1.5	C	220	21	6.9	
38006036005	1/8-27 NPTF	C	120	21	6.9	
38006036006	1/8-27 NPTF	C	150	21	6.9	
38006036009	1/8-27 NPTF	C	120	21	6.9	
38006036014	M10X1.5	C	220	21	6.9	
38006036016	M10X1.5	C	120	21	6.9	
38006036017	1/8-27 NPTF	C	150	21	8.2	
38006036018	M10X1	C	150	21	6.9	
38006036019	M10X1.5	C	150	21	6.9	
38006036020	M10X1	C	120	21	6.9	
38006036021	M10X1	C	150	21	6.9	
38006036022	1/8-27 NPTF	C	220	21	6.9	
38006036024	M10X1T	D	150	10.5	6.9	
38006036507	M10X1.5	C	200	22	6.9	
38006036511	M10X1	C	120	22	8.5	
38006036512	M10X1T	C	150	22	8.2	
38006036513	M12X1.5	C	150	22	6.9	
38006036516	1/8-27 NPTF	C	200	22	8.2	
38007439001	M14X1.5	H	120			100
38007439002	M14X1.5	H	120			96
38007439003	M14X1.5	H	150			115.5
38007439004	M14X1.5	H	120			92
38007439005	M14X1.5	H	120			105
38007439006	M14X1.5	H	120			105
38007439007	M14X1.5	H	120			100
38007439008	M14X1.5	H	120			102
38007439009	1/2-14 NPTF	H	120			96
38007439011	M14X1.5	H	120			103
38007439012	5/8-18 UNF	H	120			106
38007439013	1/2-14 NPTF	H	120			100
38007439014	M14X1.5	H	120			110
38007439015	M16X1.5	H	120			92

KMGY ID	Thread T	Connector	Range (°C)	L (mm)	D (mm)	Switching point (°C)
38007439016	M16X1.5	H	120			100
38007439017	M14X1.5	H	150			120
38007439018	M14X1.5	H	150			130
38007439024	M14X1.5	H	120			105
38007439025	3/4-14 NPTF	H	120			103
38007439026	M14X1.5	H	120			105
38007439027	3/8-18 BRIGGS	H	120			94
38007439028	M14X1.5	H	150			140
38007439030	M14X1.5	H	120			88
38007439031	M14X1.5	H	120			100
38007439032	M14X1.5	H	120			100
38007439033	3/8-18 BRIGGS	H	120			105
38007439034	M14X1.5	H	120			105
38007439035	M14X1.5	H	120			107
38007439037	M14X1.5	H	120			97
38007439038	M16X1.5	H	120			97
38007439101	3/4-14 NPTF	H	120			103
38025136001	B3/8	A	120	29	9	
38025136002	M16X1.5T	A	120	29	9	